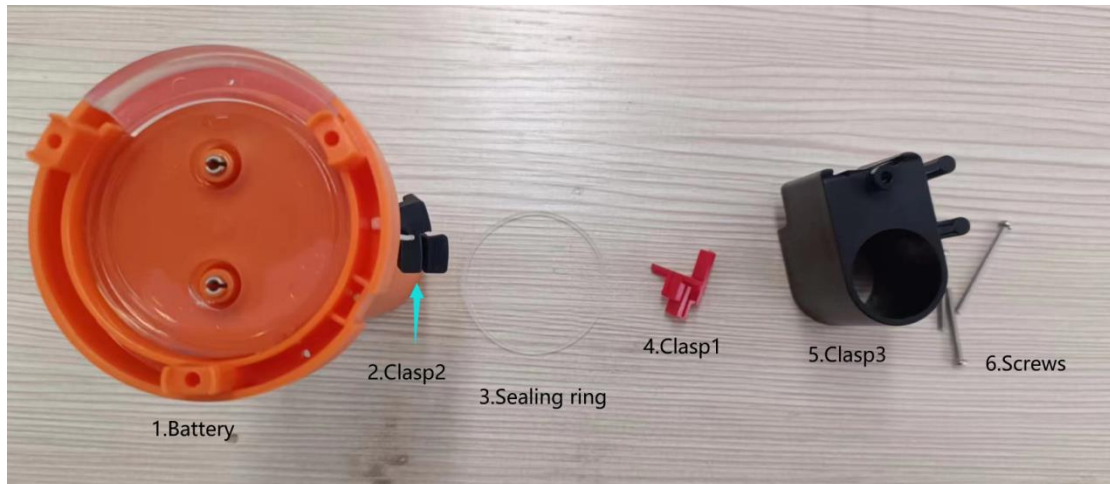


# NAS-1000 Battery Assembling

NAS-1000 Accessories:

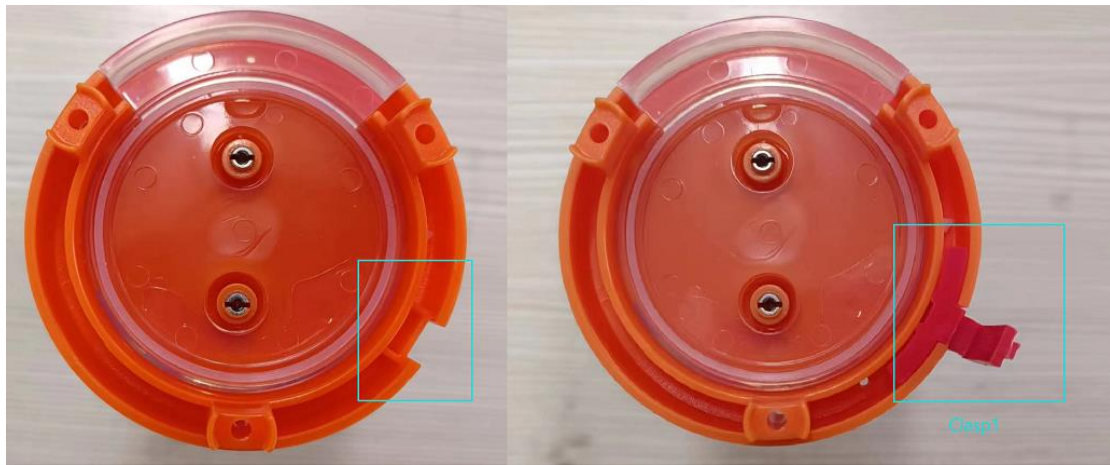


Installation Steps:

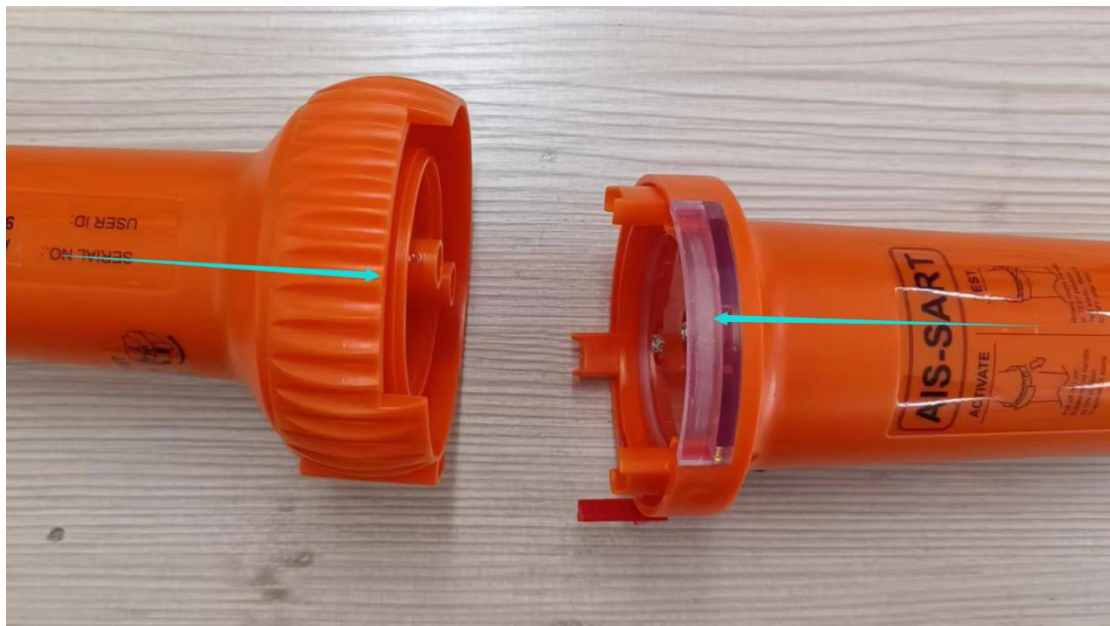
**Step1: Place the sealing ring**



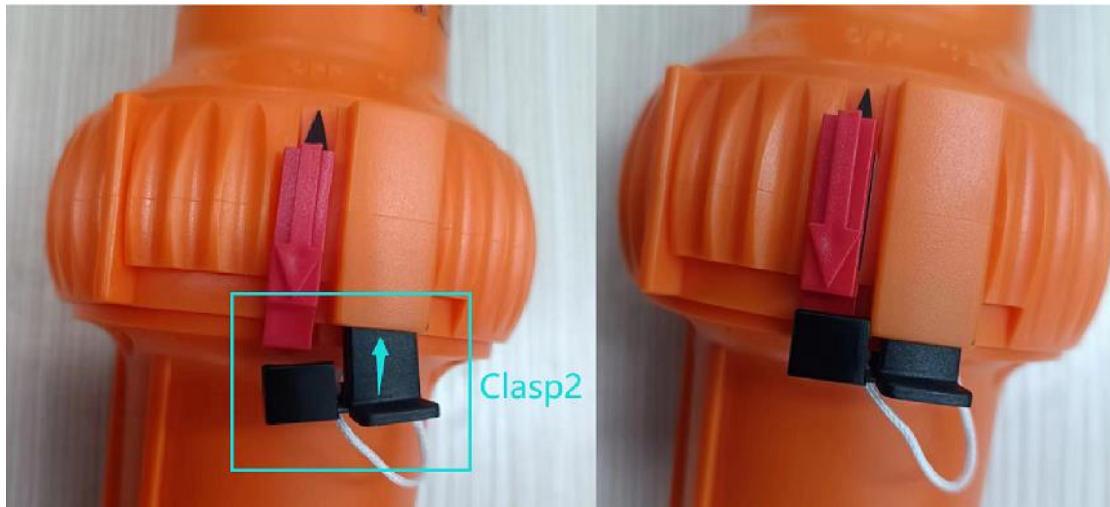
**Step2: Place the clasp1**



**Step3: Combine the two**



**Step4: Place the clasp2**



**Step5: Place the clasp3**



## Step6: Screw in screws

Attention: Put the No. 3 screw into the black round hole

