

- Dual receivers

Two receivers (2 channels each) in hot standby mode.

- Dual channels

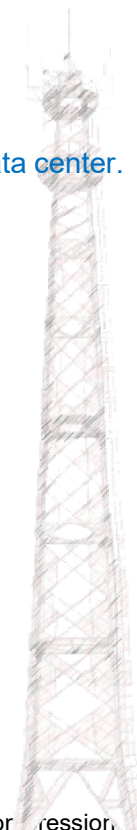
Transfer the data both by wireless 4G and by LAN cable.

- Dual storage

Store data in local 64G memory and transfer the data to be stored at data center.

- Dual powers

Built-in UPS together with external power supplies.



NBS-6000 AIS base station is designed to monitor the various AIS targets in water.

Some special technologies are adopted in the equipment, which include TDMA, data compression, wireless 4G, battery charging/discharging management. The equipment conforms to the latest ITU standards.

Main features:

- AC 110V/220V power supply, flexible for different installation locations.
- Standard 4U mounting size, suitable to be mounted in existing rack of base station.
- Dual AIS receivers in hot standby mode to ensure the high reliability.
- SSD storage (optional) can store AIS data of up to 1 year.
- Two-way communication between base station and data center. The base station can be set and monitored remotely from data center.
- Internal UPS (optional) can support the base station to keep working more than 12 hours in case of power off.
- The status of base station can be monitored on local operation panel (color touchscreen) in addition to remotely monitoring by web mode.



Technical Specifications

● AIS receiving

- Channels: AIS 1 and AIS 2
- Sensitivity: \cong -112 dBm
- adjacent channel selectivity: \geq 70dB
- Anti-blocking: \geq 74dB
- MSG type: MSG 1 ~ MSG 24
- Channels: 4 (2+2)
- **Data transfer:** LAN cable and 4G (optional)
- **Memory size:** 64G (optional)
- **UPS capacity** Min 12 hours

● Interface

- Port for VHF antenna: 50Ω/PL249
- Port for GPS antenna: 50Ω/TNC
- LAN port: RJ45×2
- **Operating temp:** -30°C ~ +70°C
- **Size (mm):** 178(H)x483(W)x400(D)
- **Weight (kg):** 10.25 (station unit only)

Equipment List

● Standard:

- AIS base station 1 set
- VHF antenna 2 pcs
- VHF cable 2 pcs
- AC power cord 1 pc
- mounting bracket for antenna 1 pc
- Lightning Arrestor 2 pcs
- Accessories 1 set

● Options:

- UPS (external) 1 pc
- 4G router 1 pc
- 64GB SSD 1 pc



System Diagram

