

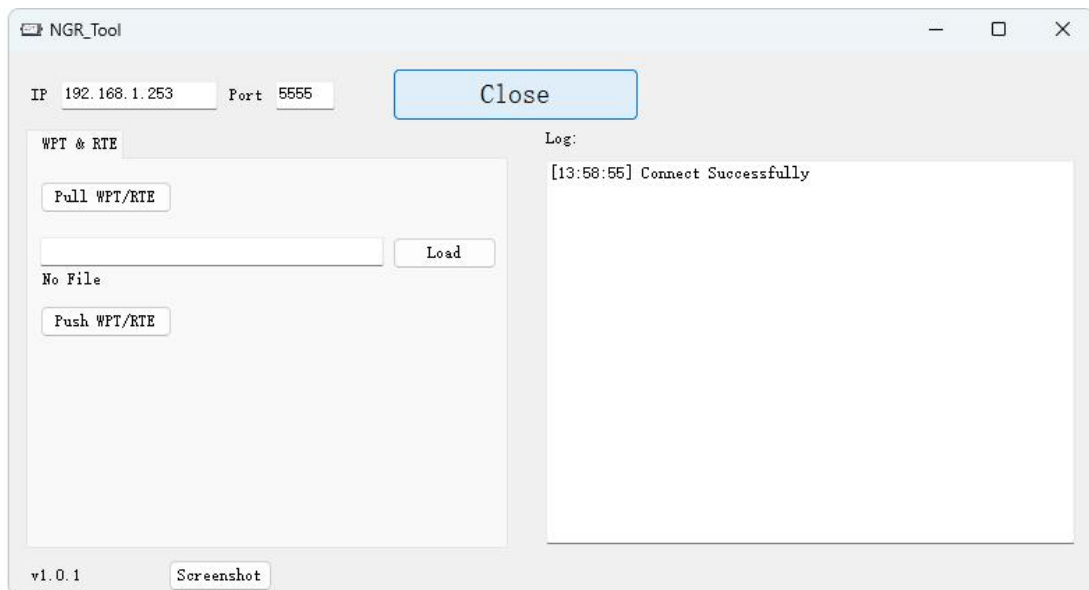
# NGR-3000 Route import and export

Starting from software version 2.01, NGR-3000 supports the import and export of routes through network.

## 1, Connect

Connect the computer to the NGR through the network cable, set the computer IP to 192.168.1.10, and then open the software NGR\_Tool.exe.

Click 



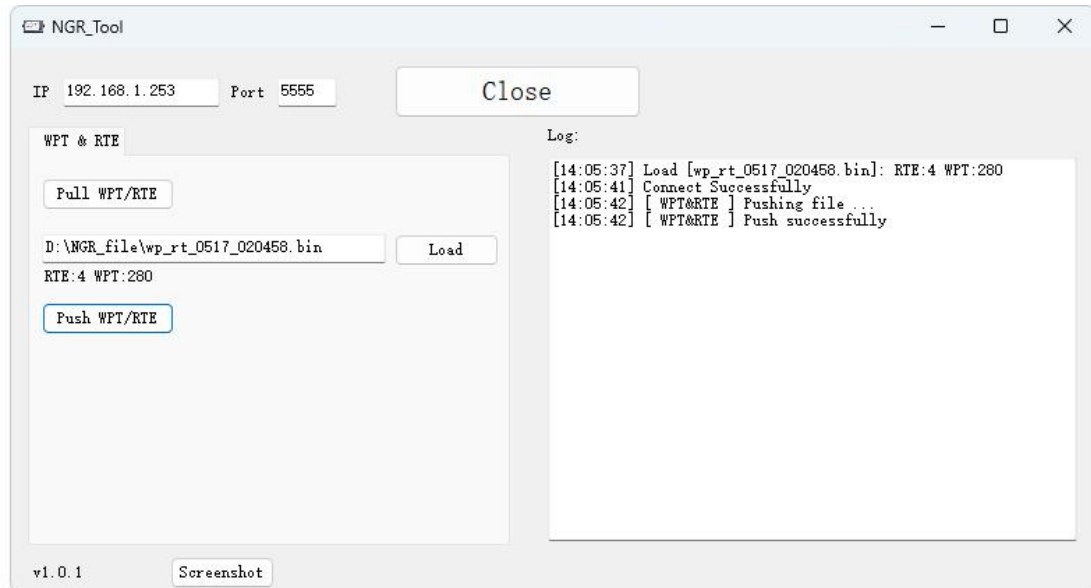
## 2, Export the route file

Click  to get the route bin file and save it in the "NGR\_file" folder



### 3, Import route file

- 1) Click **Load** to select the route file, which can be an route bin file exported from NGR or a gpx file.
- 2) Click **Push WPT/RTE** to push route file



#### Problem check:

1, cannot connect.

Try ping 192.168.1.253. If you can ping, please try to restart NGR. If can't ping, please check IP and network cable.

2, gpx file cannot be imported.

Please use the software [opencpn](#)/NES-3010 for route planning and export gpx files