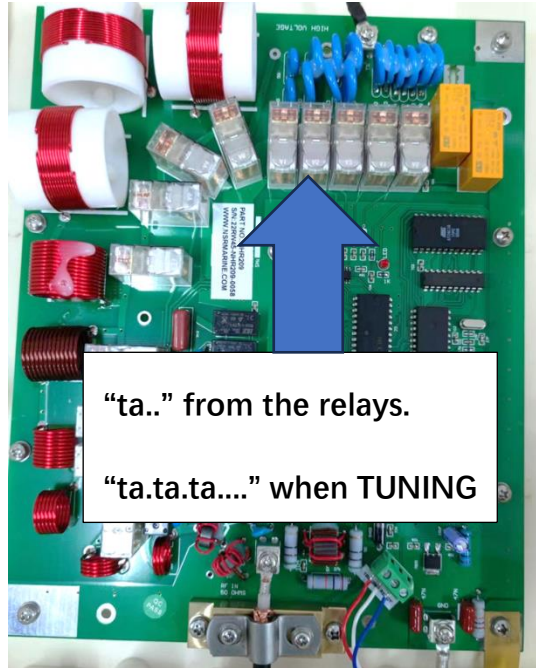


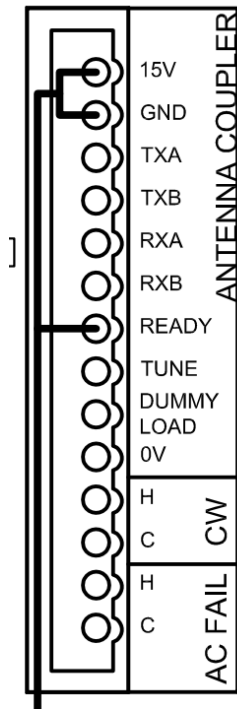
How to Check NHR-1000A Coupler

2024-09-29

Disconnect and then connect the power cable, the relay of coupler of make short "ta.." sound.



If no "ta.." sound when coupler power ON, check the power supply to coupler at NHR204 interface PCB(transceiver unit).



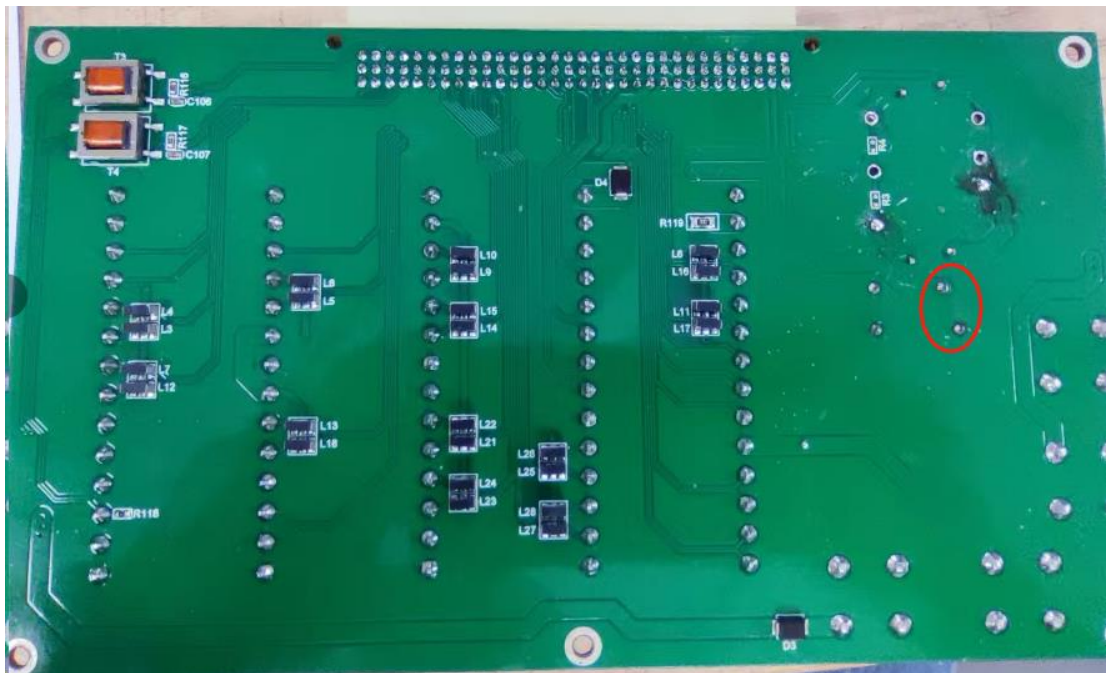
Measure the voltage between 15V and GND, it should be around 15V.

If no 15V.

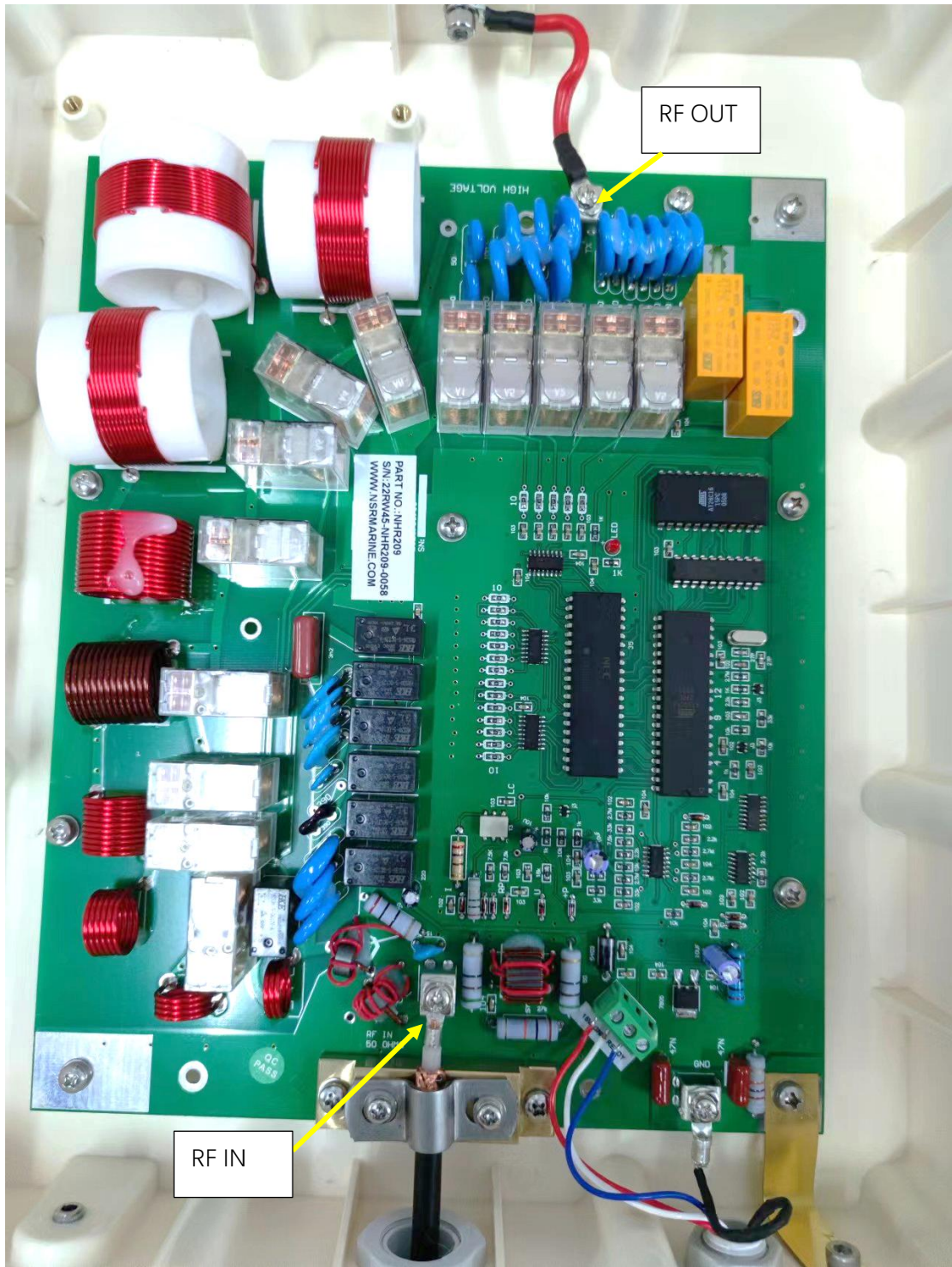
1. Change NHR204 PCB. Make sure the new NHR204 PCB has the same version.
2. Or check the NHR204 PCB. Try to repair.



Check the FUSE F1 firstly, it is at the front side of NHR204 PCB.



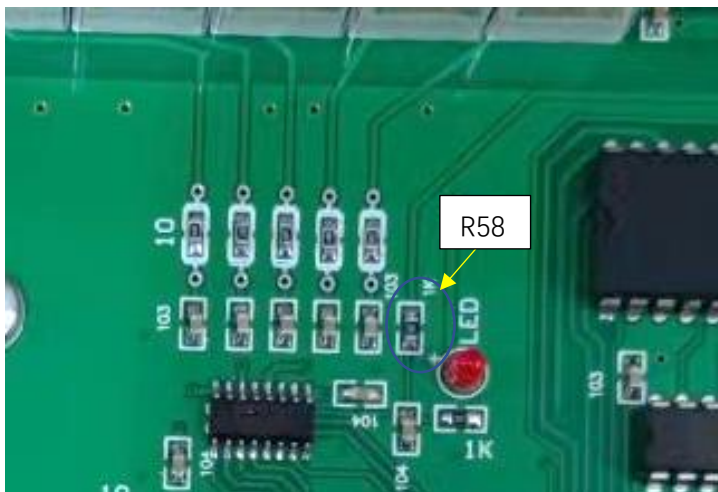
If the FUSE is OK, try to short connect the two points at the back side of NHR204 PCB.



Confirm that there are no burnt components.

Confirm RF power input and output are normal.

Tune at every band, the coupler start to TUNE(make ta..ta..ta.. sound), then stop.
The coupler should work fine. But still TUNE ERR, that means READY signal is not received by transceiver unit.

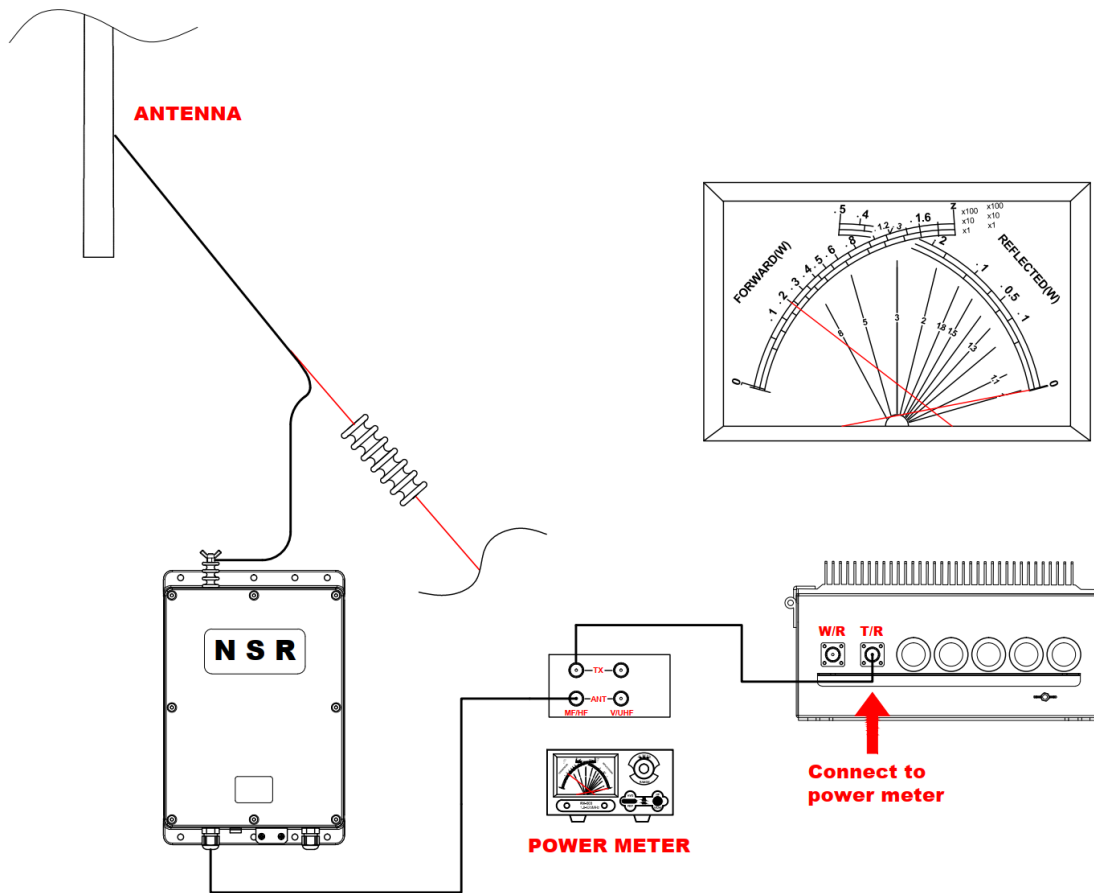


Confirm R58 is normal. R58=1000 ohm.
R58 is for READY signal to transceiver unit.

If coupler is OK, but still TUNE ERR, the problem may come from NHR201.



Test Connection 1: Power Meter + Coupler + Antenna



Test Connection 2: Power Meter + Coupler + Dummyload

