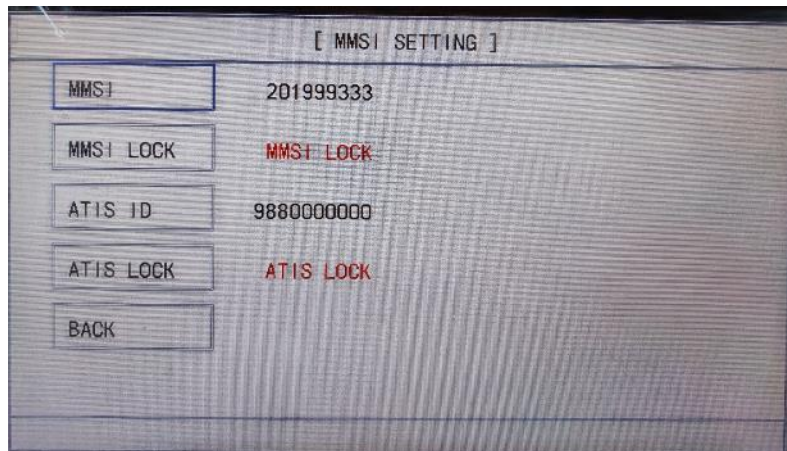


How to change MMSI of NVR-3000

Enter MMSI SETTING menu from MAIN MENU-DSC-MMSI SETTING



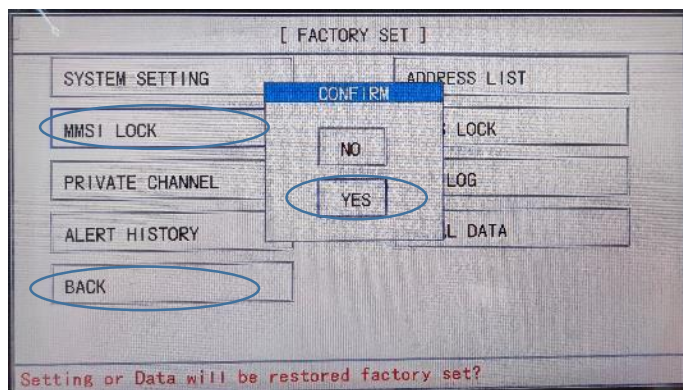
If "MMSI LOCK" is displayed.

Enter the FACTORY SET menu from MAIN MENU-SERVICE-FACTORY SET.

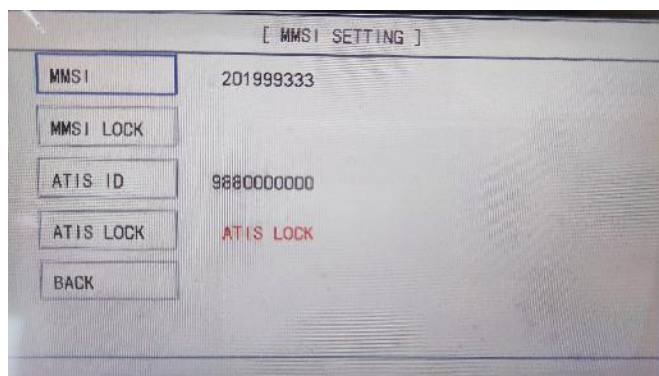
Password is 77777777.

Touch "MMSI LOCK", then confirm "YES" to remove the MMSI LOCK.

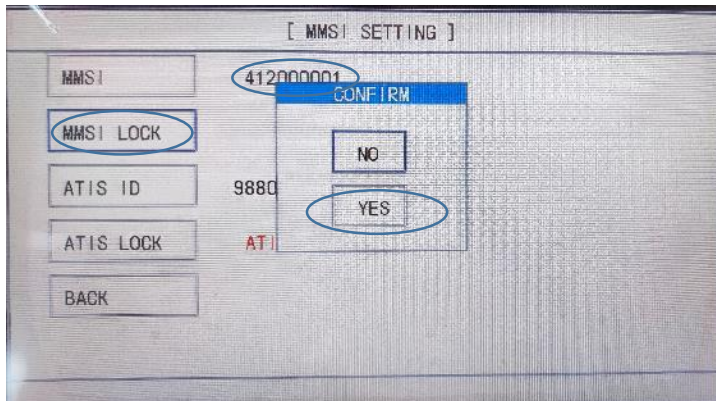
Touch "BACK", the NVR-3000 will power off.



Power on the NVR-3000 again. MMSI LOCK is not displayed.



Input new MMSI, then touch "MMSI LOCK".
Confirm with "YES" at the dialog box.



NVR-3000 is working with new MMSI.

