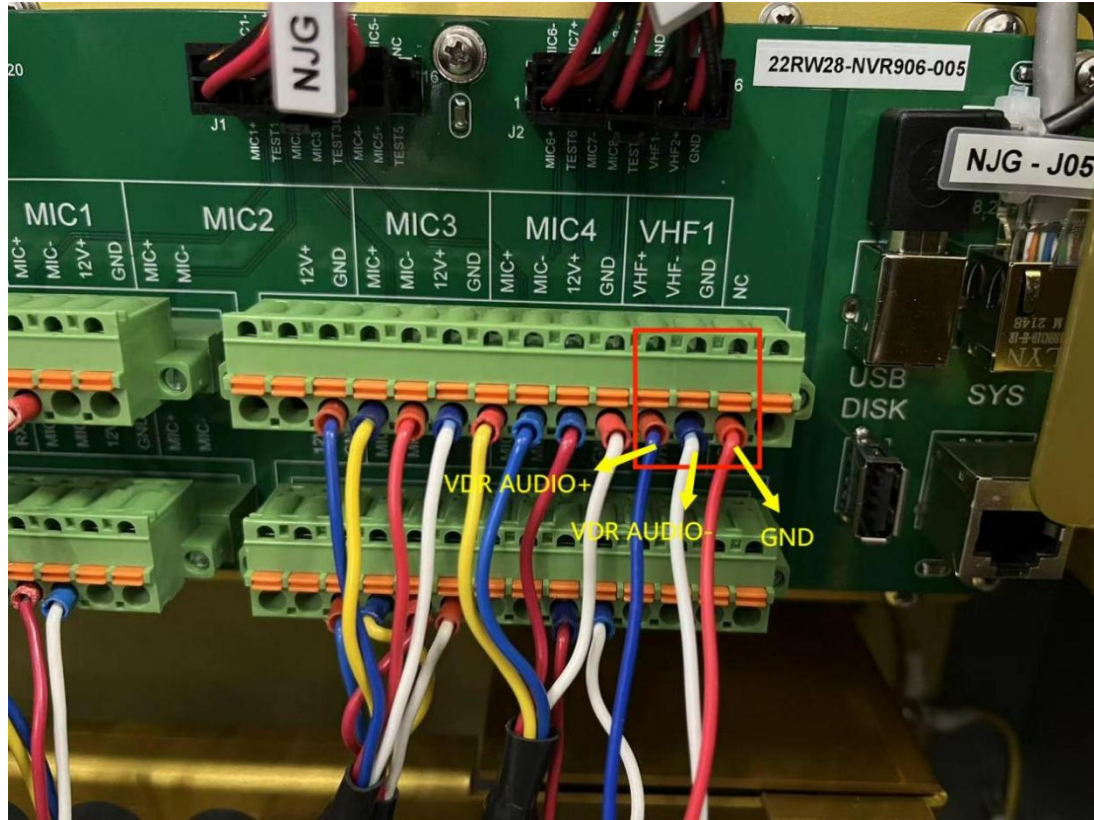


Connect VHF to NVR-9000

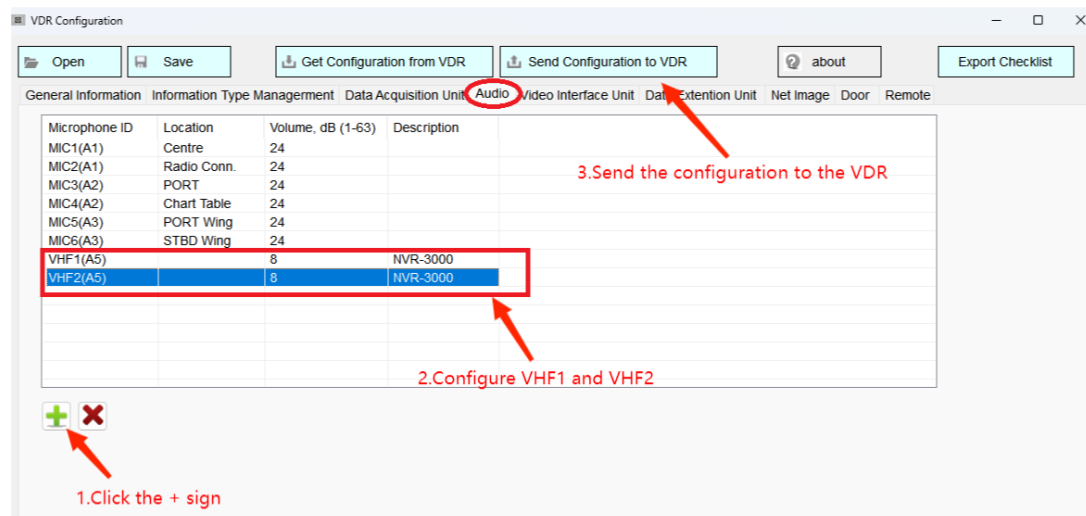
Step1

The three plug-in cables of VHF voice output: VDR AUDIO+, VDR AUDIO-, and GND are connected to the three ports of VHF+, VHF-, and GND respectively



Step2

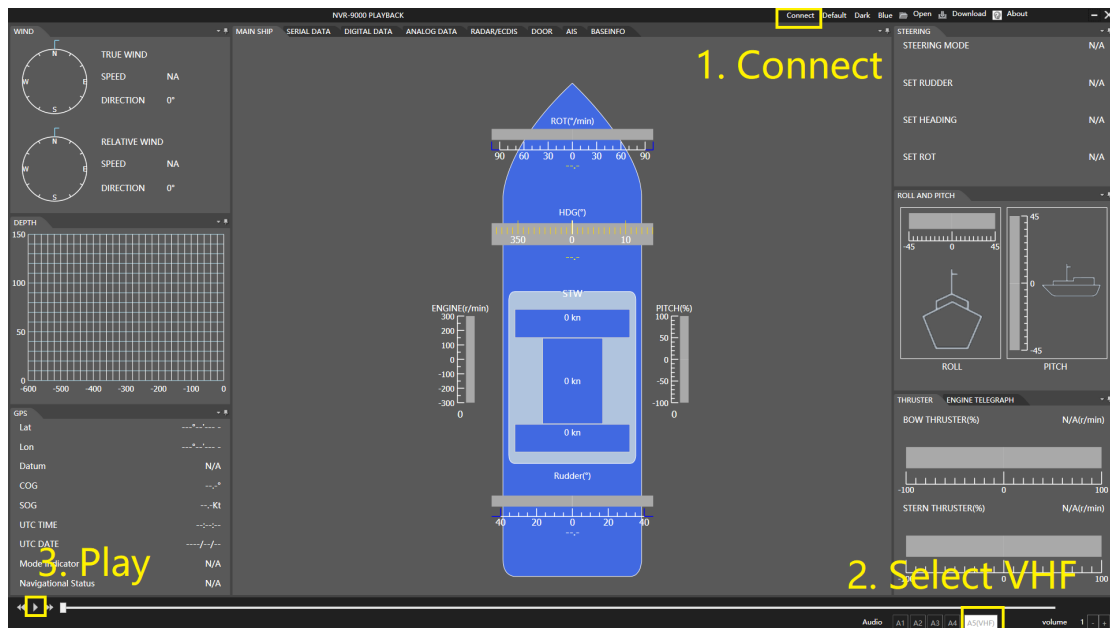
Open the VDRConfig.exe application and perform the following Settings on the Audio page



Step3

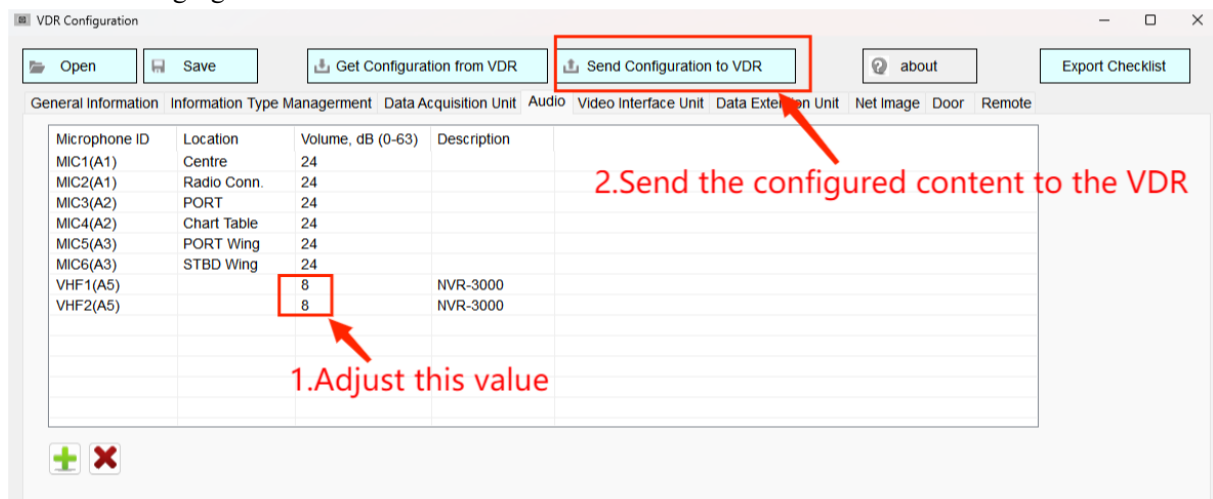
Open the VDRPlayer.exe application and click "connect" in the upper right corner. After the

connection is successful, connect successfully will be displayed. Specific operations are shown in the figure below:



If the sound quality is not good, it can be adjusted through the following two solutions:

Solution 1: Adjust the VDR Configuration software to reduce the voice gain (Volume), as shown in the following figure:



The recorded voice is better than the real-time voice. You can download and check the data.

Solution 2: By adjusting the cable for VHF- and GND, as shown in the figure below: Connect GND to VHF-



Problem check

If the VHF channel of the VDR is not working properly, you can connect the MIC's audio line(MIC+&MIC-) to VHF and check whether the VHF input is normal.