

How to Connect Analog Signal to VDR

What is Analog Signal? Analog signals are two lines with voltage or current. One DEU support 8 analog inputs for $\pm 10V$ or 4-20mA.

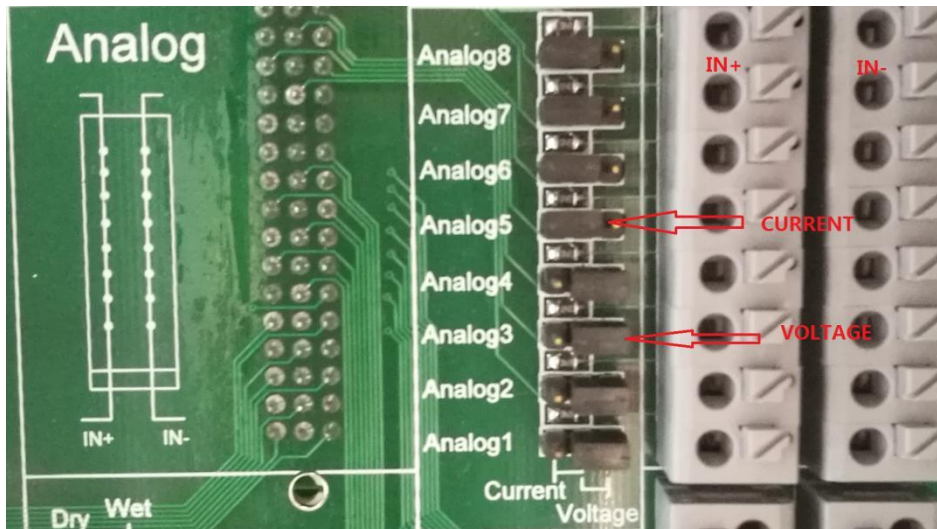
Step 1:

Ask the equipment manufacturer for the signal type(voltage or current) and its parameter table. In the table It contains the relationship between the device value and the signal value. It is needed in step3.

Step 2:

Connect the signal into DEU.

Here is a switch for each analog port on board, when it is current signal, put the jumper cap on current, and insert the active into IN+, negative into IN-. The same for voltage signal.

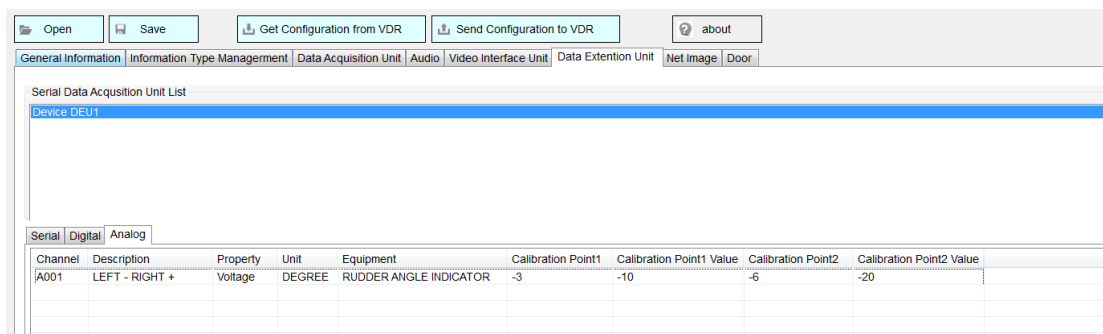


Step3

Fill the information to the configuration.

1, Find Data Extension Unit-> Select Device DEU1 -> Analog

2, Click button   Add a channel.

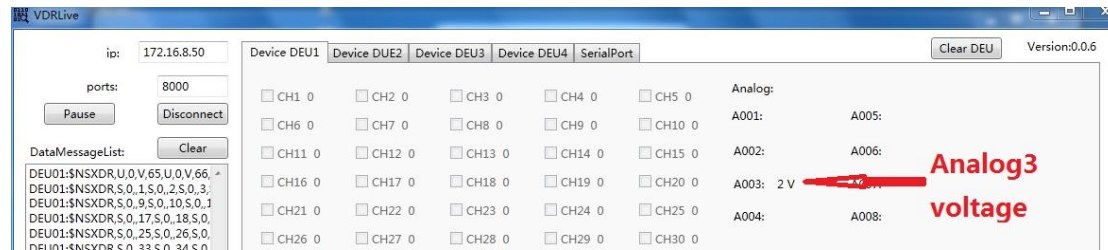


3, Fill the information, for example, add the rudder angle indicator, it is a voltage signal. Unit is

Degree. Fill the calibration with the table get in step1,two points is needed. When rudder is left 10 degree, the voltage signal is -3V, so the calibration point1 is -3, calibration point1 value is -10. calibration point2 for another data.

Step4

Confirm the signal has been acquired.



Connect software VDRLive.exe and the analog will display at right side as picture.