

How to check RAU Connection Problem

If “NO CONNECT” displayed or “RAU LOST” alarm shown, please check step by step.

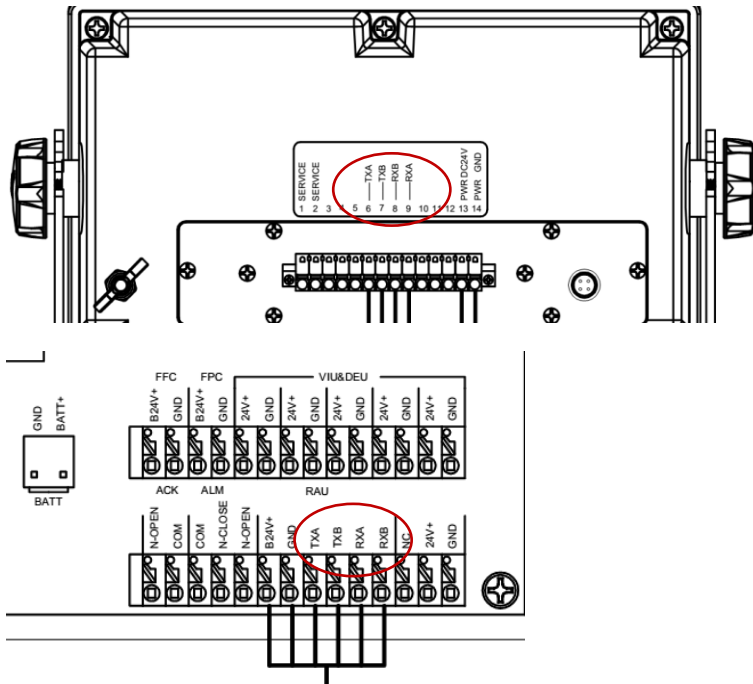
Step 1

Check the cable connection between RAU and DAU.

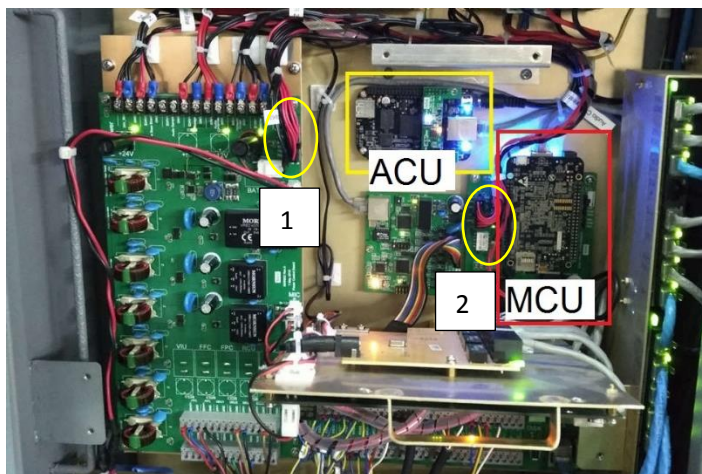
The connection order should be TXA-TXA, TXB-TXB, RXB-RXB, RXA-RXA.

Please check carefully.

| | | | | |
|-----|-----|-----|-----|-----|
| RAU | 6 | 7 | 8 | 9 |
| | TXA | TXB | RXB | RXA |
| DAU | TXA | TXB | RXB | RXA |



Step 2



Please check connector 1 and connector 2, if there is any bad connection.

Please tighten the connector if any loosen.

If the alarm remain, please contact the manufacture for spare part.