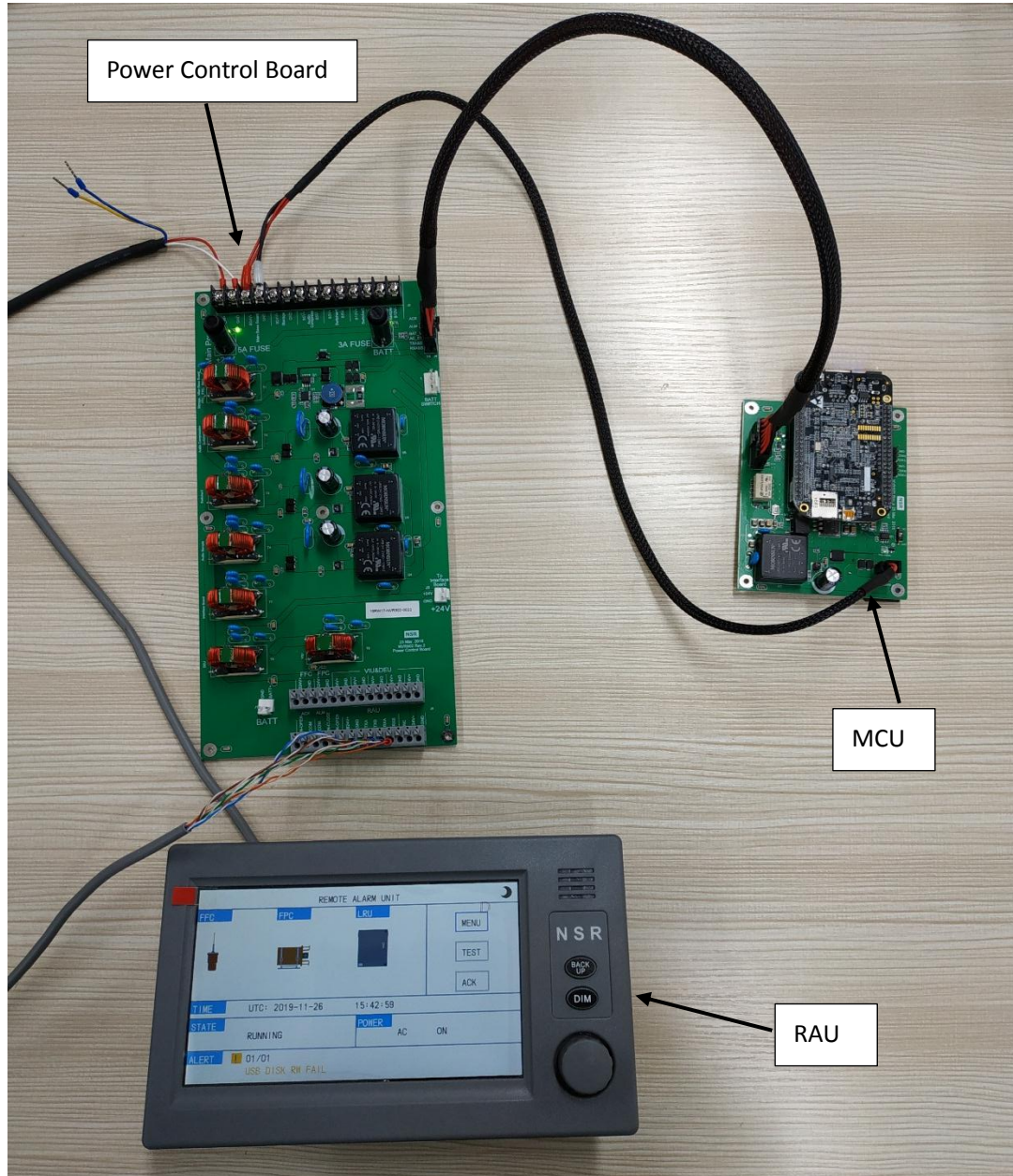


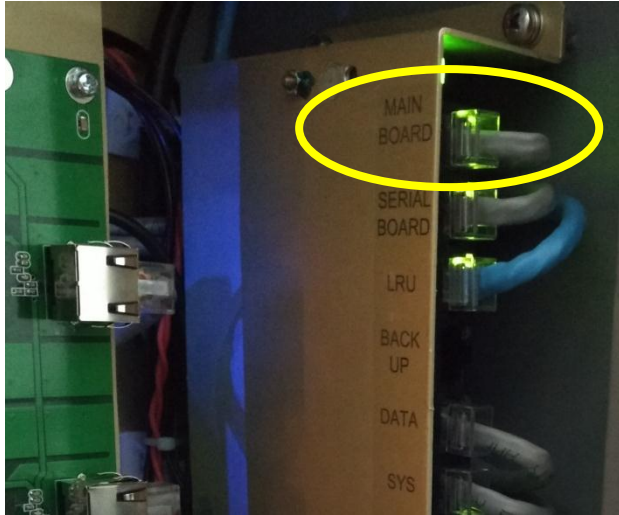
## How to check RAU NO Connect

If "NO CONNECT" displayed alarm shown, please check step by step.

"NO CONNECT" means downlink RS422 data from DAU to RAU is not good.



Step 1



Check the "MAIN BOARD" LED status at swither.  
If OFF, the main board may be fault.  
If ON, please do step 2.

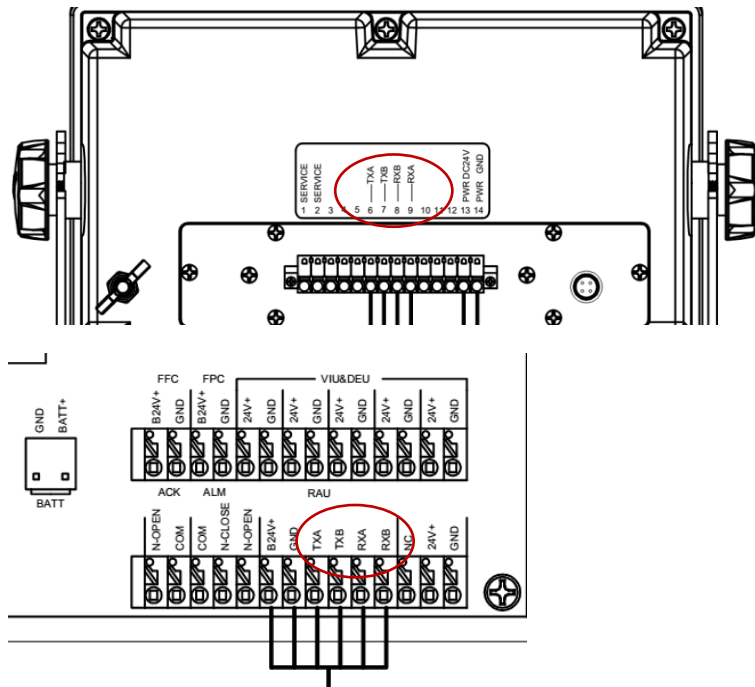
## Step 2

Check the cable connection between RAU and DAU.

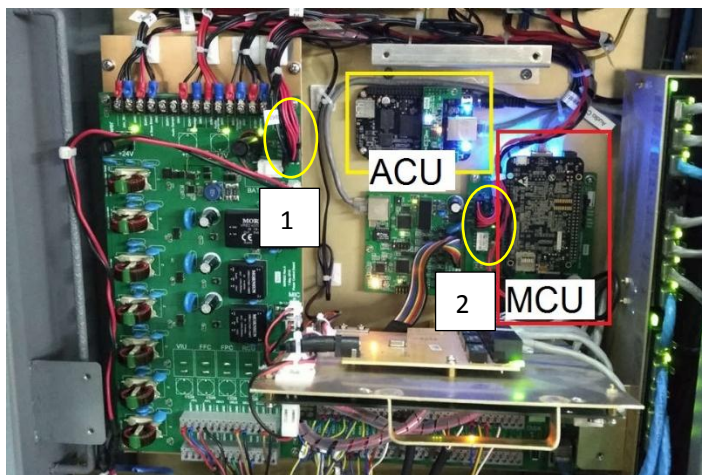
The connection order should be TXA-TXA, TXB-TXB, RXB-RXB, RXA-RXA.

Please check carefully.

RAU	6	7	8	9
	TXA	TXB	RXB	RXA
DAU	TXA	TXB	RXB	RXA



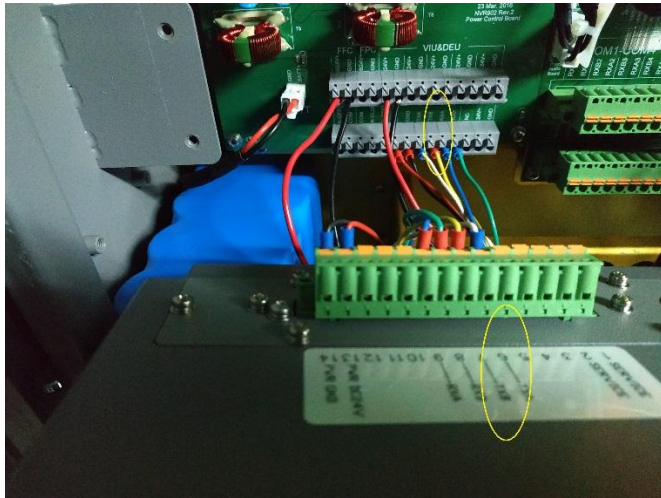
## Step 3



Please check connector 1 and connector 2, if there is any bad connection.

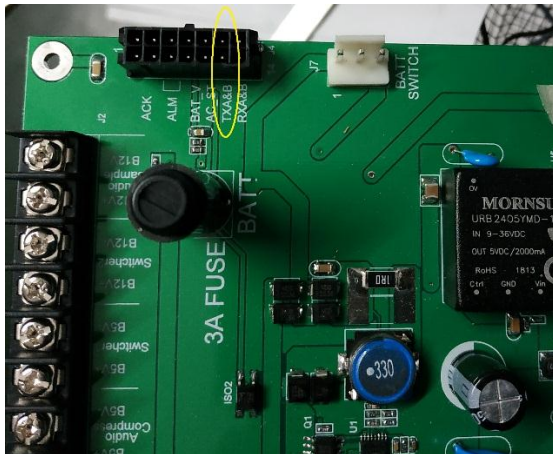
Please tighten the connector if any loosen.

#### Step 4

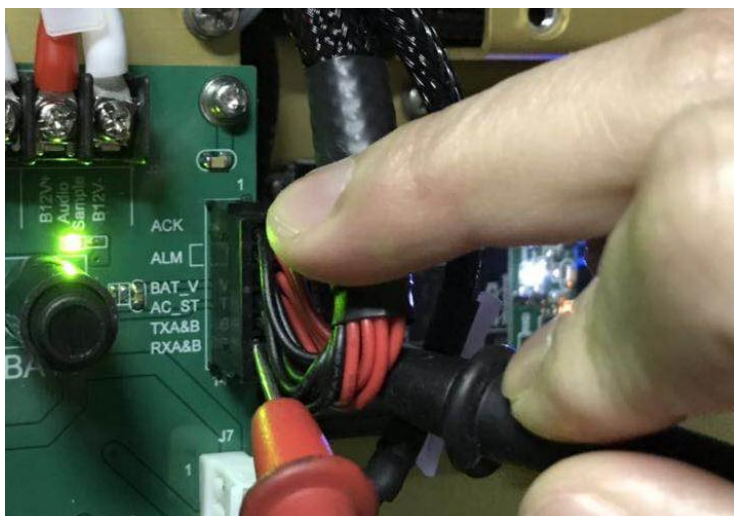


Check the TXA and TXB signal at DAU and RAU.  
Measure the voltage between TXA and TXB. (Around 2.8V DC)

#### Step 5

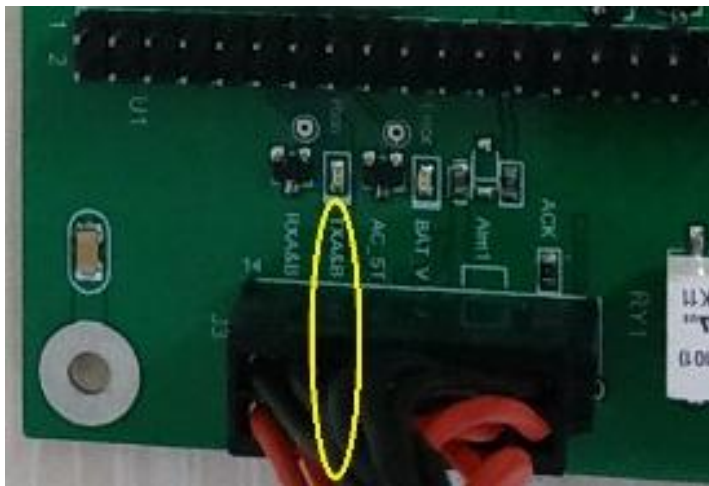
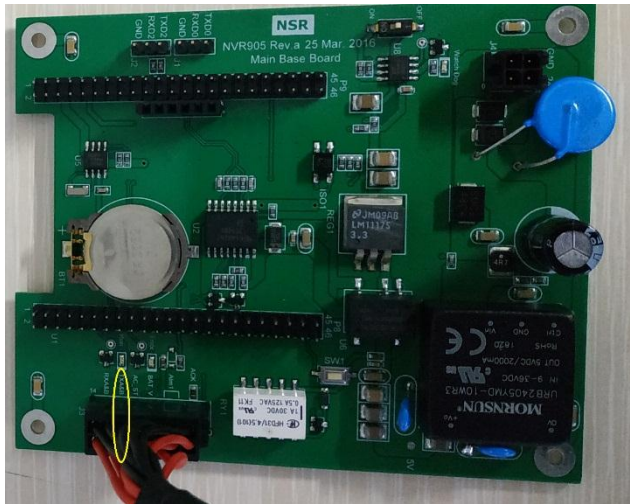


Check the TXA and TXB signal at power board.



Measure the voltage between TXA and TXB. (Around 2.8V DC)

## Step 6



Check TXA and TXB at MCU Main Base Board

Measure the voltage between TXA and TXB. (Around 2.8V DC)

Main Base Board is the source of TXA and TXB signal.