

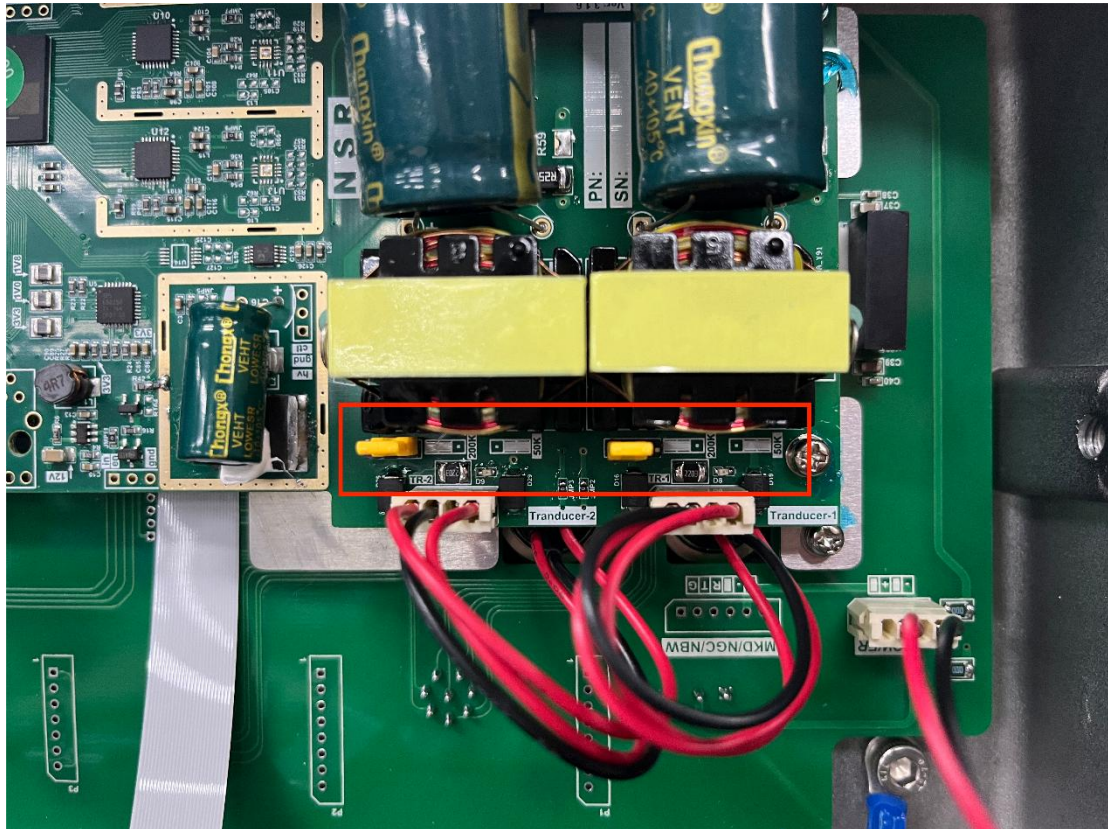
NED-3010 Quick use

Catalogue

1. Replace the transducer	2
2. Modify the transducer frequency	3
3. Replace the transducer display view	4
4. Transmit power setting	6
5. Function Unlock	7

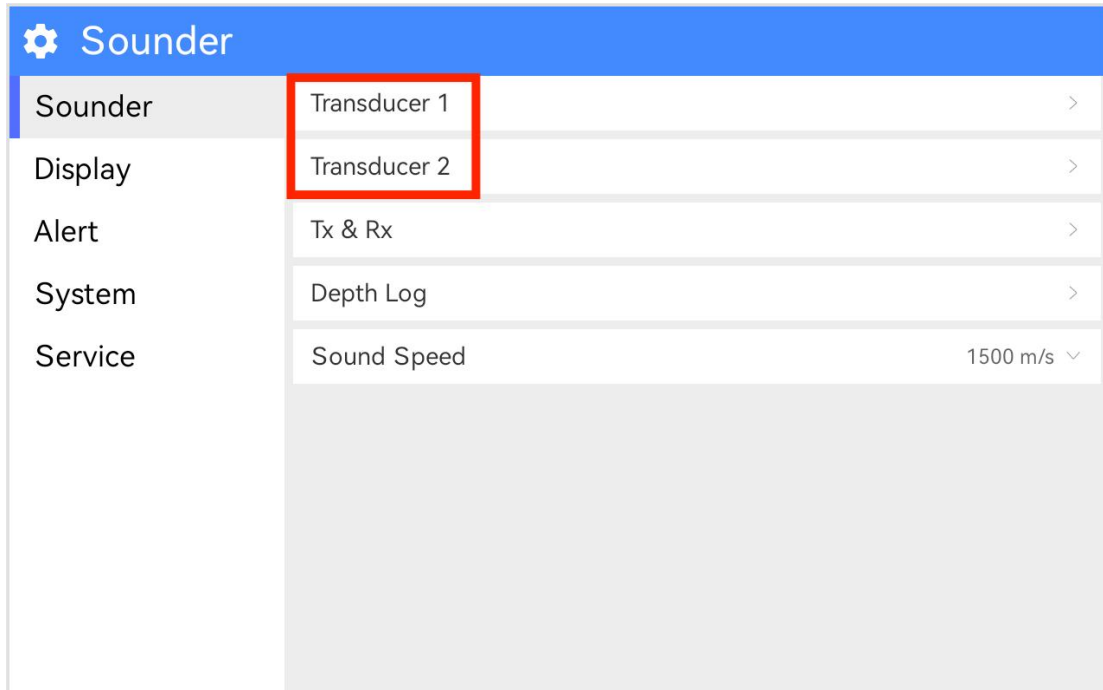
1. Replace the transducer

- The 50K and 200K transducers can be plugged into the back interface No. 1 and No. 2.
- Jump the NED301 board jumper cap to the corresponding frequency.



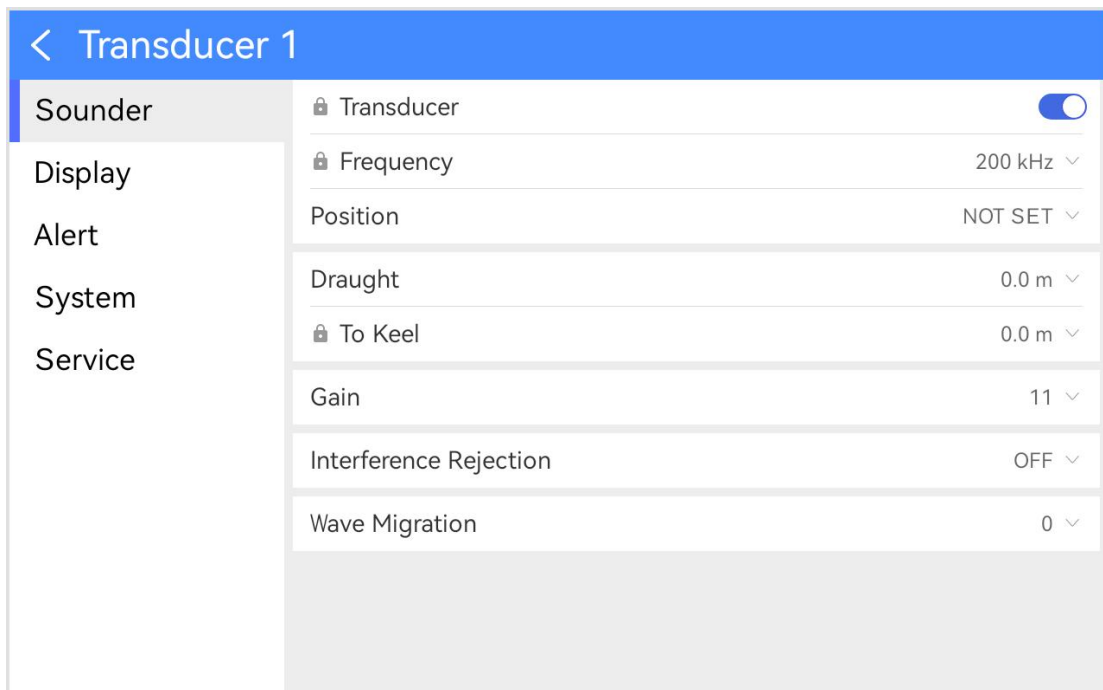
2. Modify the transducer frequency

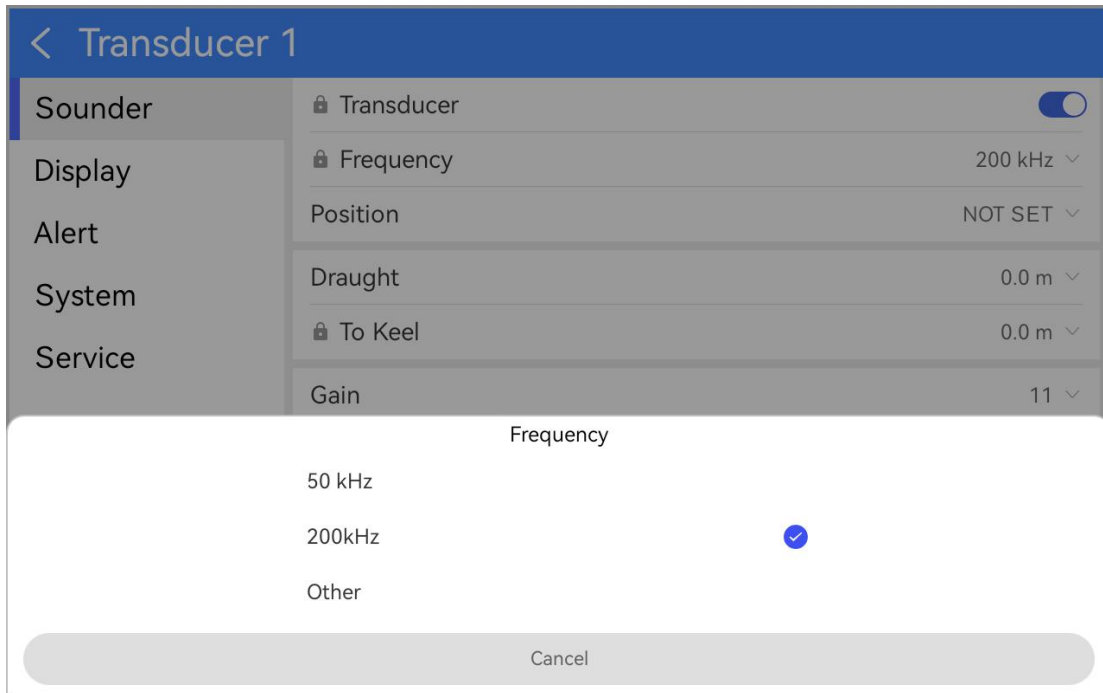
1. Click to enter the transducer to be modified (take interface No. 1 as an example)



2. You can select the switching state of the transducer and modify the transducer frequency. If you encounter problems, please see [5. Function Unlock](#) Description

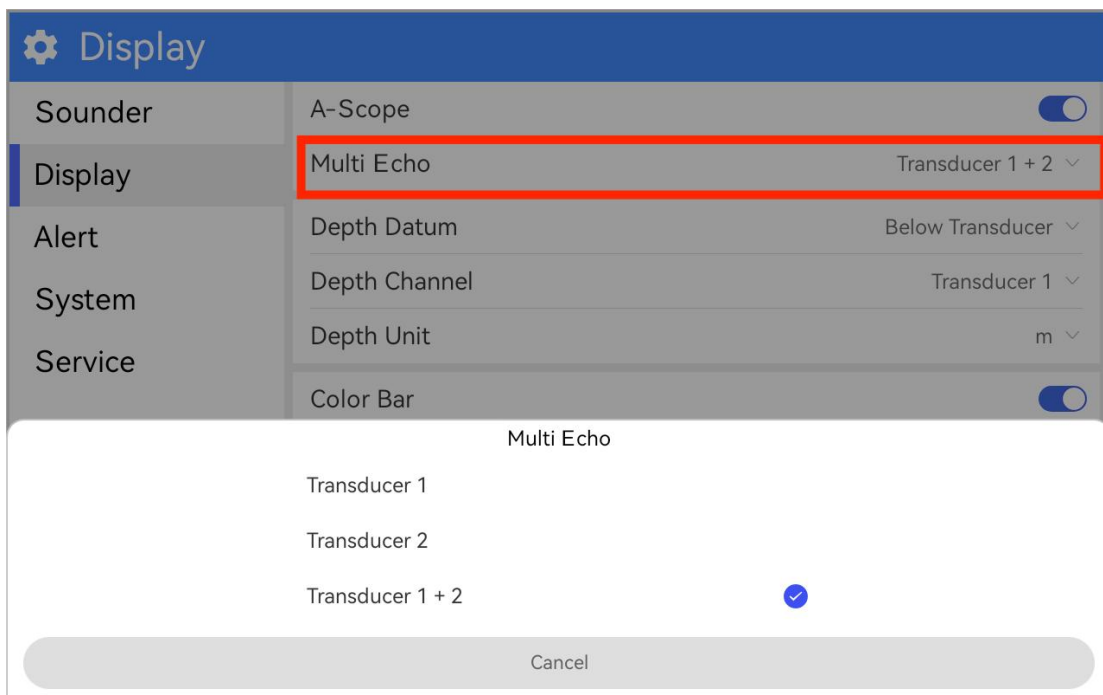
Note: When changing the transducer frequency, be sure to jump the NED301 board jumper cap to the corresponding frequency.

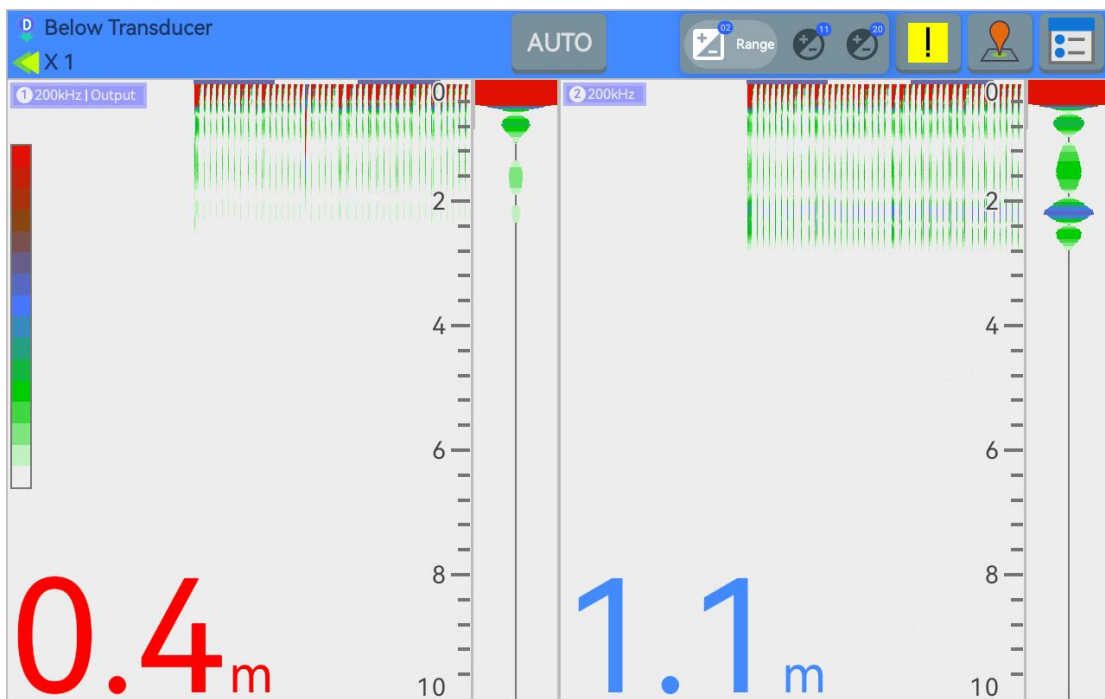
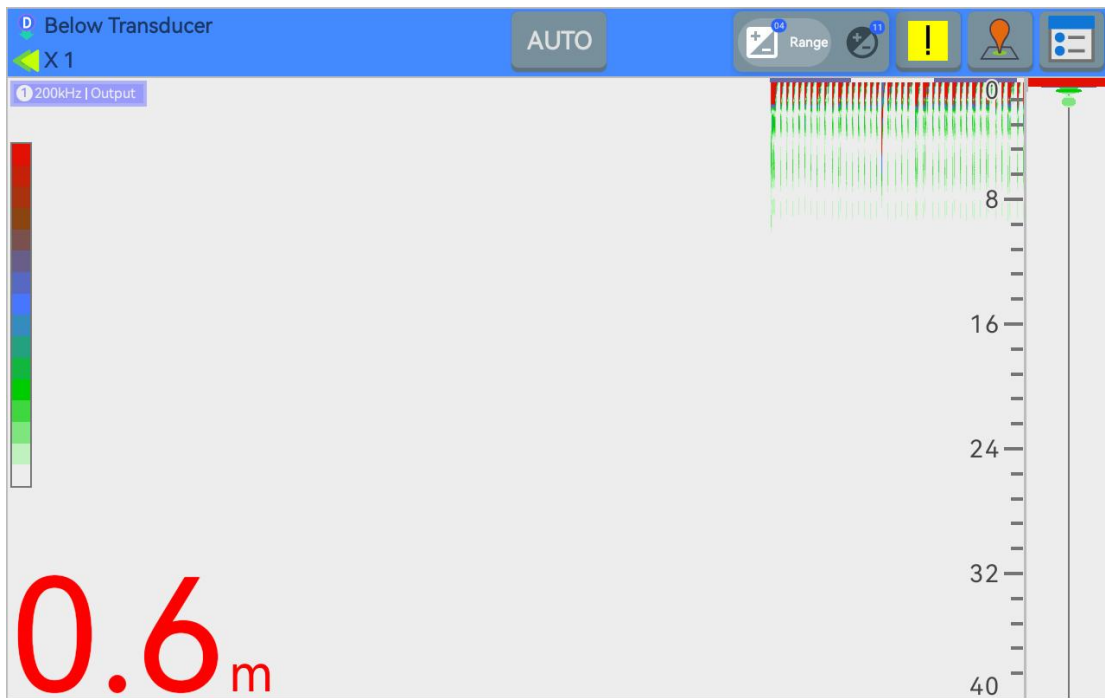




3. Replace the transducer display view

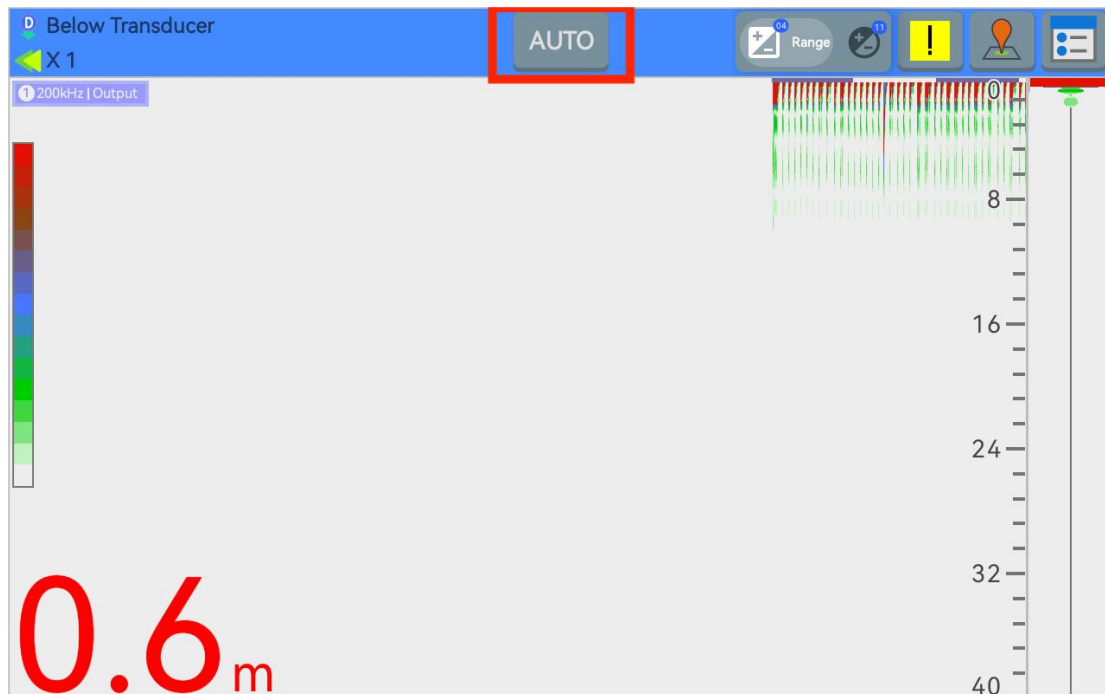
1. You can choose to display a single probe or a combination of two probes





4. Transmit power setting

1. You can quickly change the launch mode on the main page by clicking the buttons (AUTO and Manual) in the middle of the header
2. The matching knob can change the range and adjust the gain



3. Automatic mode

< Tx & Rx		
Sounder	Tx Power	Auto ▾
Display	Tx Rate	Auto ▾
Alert	Pulse Width	Auto ▾
System	Pulse Width Mag	0 ▾
Service		

4. Manual mode

Tx & Rx		
Sounder	Tx Power	100% ▾
Display	Tx Rate	1Hz ▾
Alert	Pulse Width	2000us ▾
System	Pulse Width Mag	0 ▾
Service		

5. Function Unlock

If you encounter an icon with a lock on the function interface, you need to enter a password to unlock it if no response is received when you press it.

The steps are as follows:

1. Service → Advanced Enter your password and return to the home page
2. Enter the function interface again and you can use it